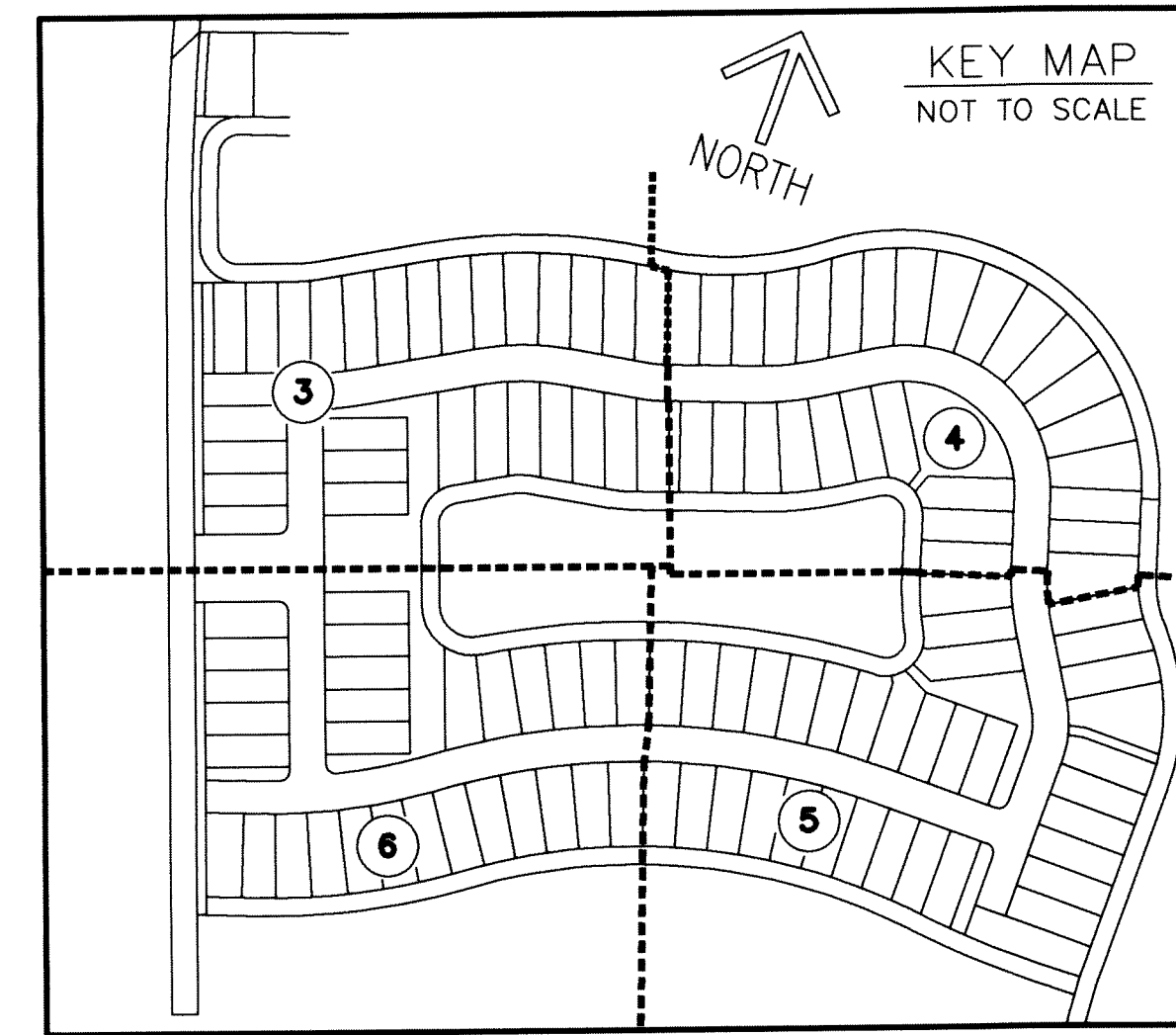


MATCH LINE A THIS SHEET

AVENIR - POD 9

BEING A REPLAT OF A PORTION OF PARCEL A-2, AVENIR, AS RECORDED IN PLAT BOOK 127 PAGE 85, TOGETHER WITH ALL OF TRACT RBE1, AVENIR SITE PLAN 3 - POD 8, AS RECORDED IN PLAT BOOK 131 PAGE 124, ALL OF THE PUBLIC RECORDS OF PALM BEACH COUNTY, FLORIDA LYING IN SECTIONS 10 AND 15, TOWNSHIP 42 SOUTH, RANGE 41 EAST, CITY OF PALM BEACH GARDENS, PALM BEACH COUNTY, FLORIDA.

THIS INSTRUMENT PREPARED BY
RONNIE L. FURNISS
OF
CAULFIELD and WHEELER, INC.
SURVEYORS - ENGINEERS - PLANNERS
7900 GLADES ROAD, SUITE 100
BOCA RATON, FLORIDA 33434 - (561)392-1991
CERTIFICATE OF AUTHORIZATION NO. LB3591
APRIL 2022



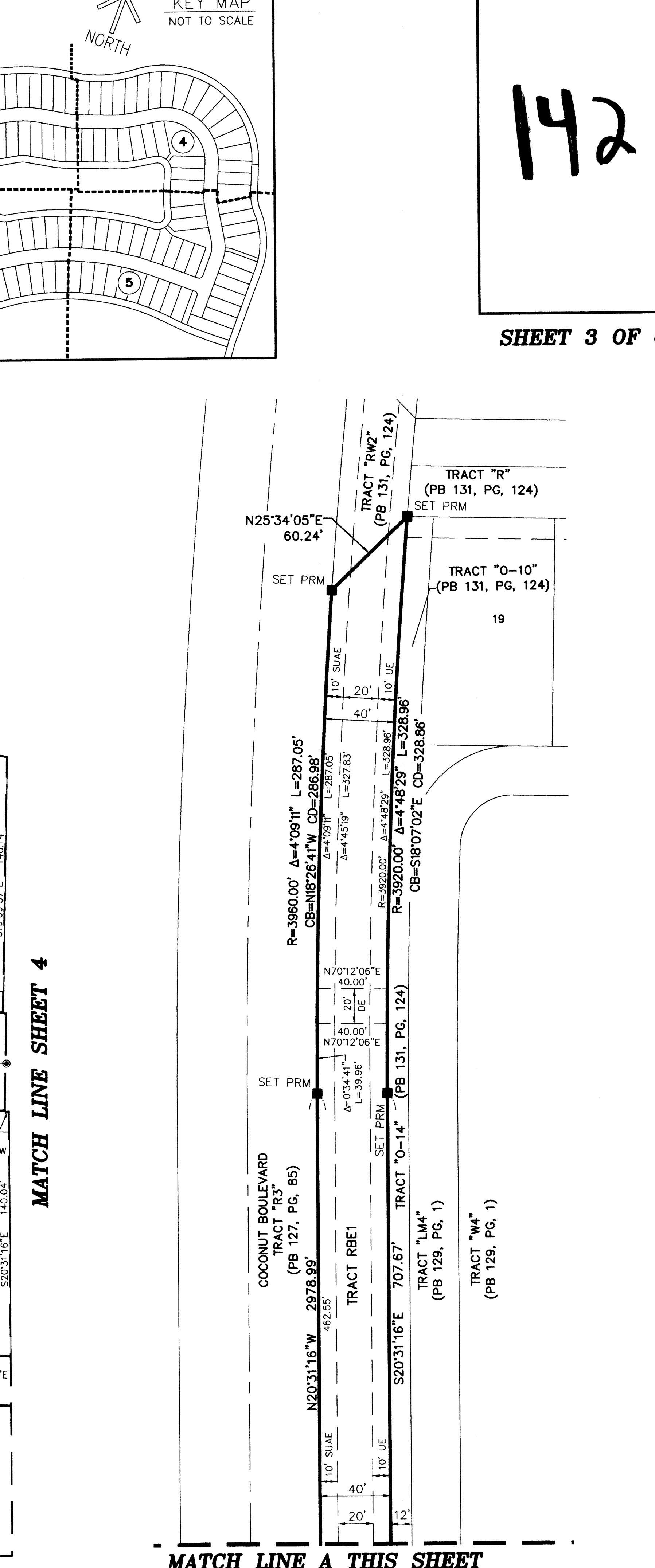
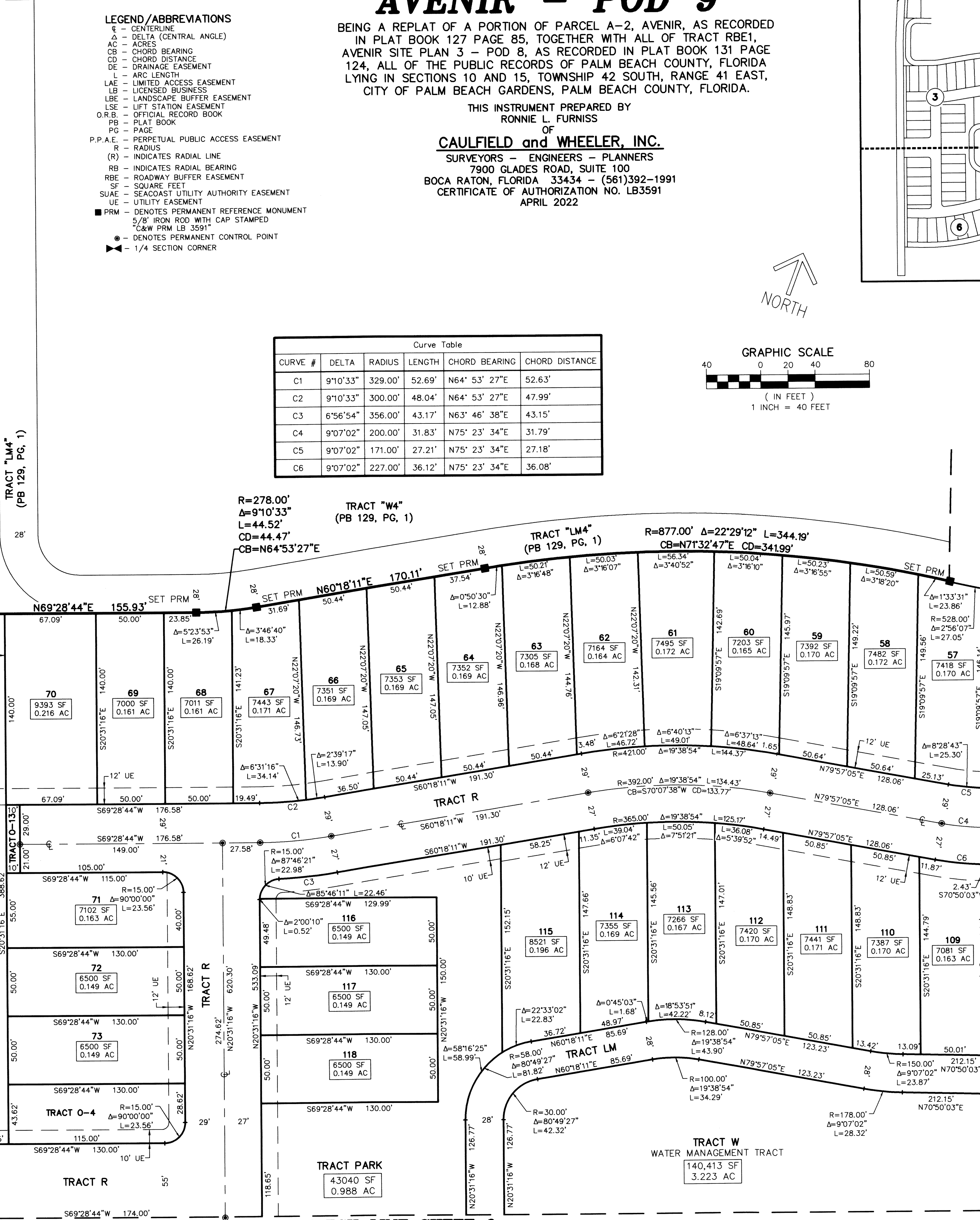
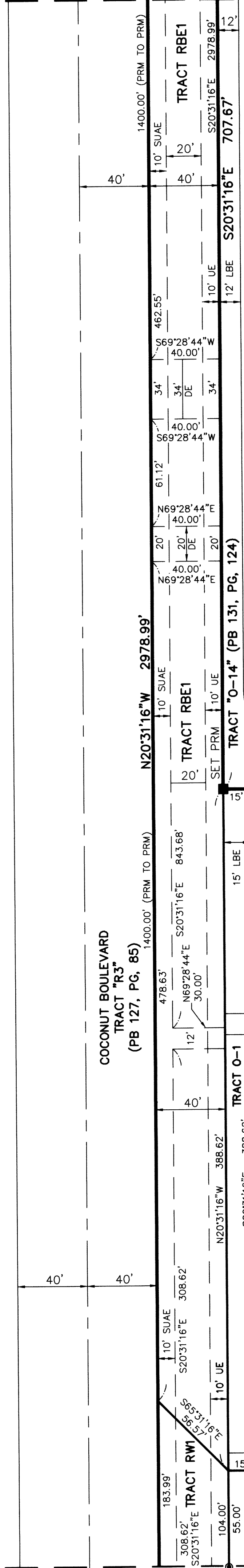
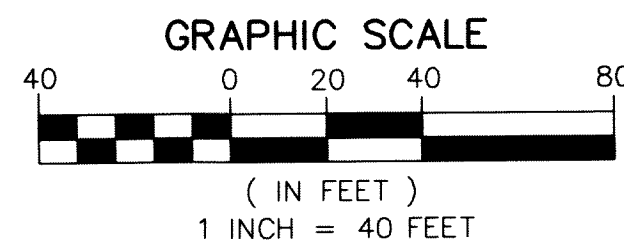
142

SHEET 3 OF 6

LEGEND/ABBREVIATIONS

- Δ - CENTERLINE
- Δ - DELTA (CENTRAL ANGLE)
- AC - ACRES
- CB - CHORD BEARING
- CD - CHORD DISTANCE
- DE - DRAINAGE EASEMENT
- L - ARC LENGTH
- LAE - LIMITED ACCESS EASEMENT
- LB - LICENSED BUSINESS
- LBE - LANDSCAPE BUFFER EASEMENT
- LSE - LIFT STATION EASEMENT
- O.R.B. - OFFICIAL RECORD BOOK
- P.B. - PLAT BOOK
- P.C. - PACE
- P.P.A.E. - PERPETUAL PUBLIC ACCESS EASEMENT
- R - RADIUS
- (R) - INDICATES RADIAL LINE
- RB - INDICATES RADIAL BEARING
- RBE - ROADWAY BUFFER EASEMENT
- SF - SQUARE FEET
- SUAE - SEACOAST UTILITY AUTHORITY EASEMENT
- UE - UTILITY EASEMENT
- PRM - DENOTES PERMANENT REFERENCE MONUMENT
5/8" IRON ROD WITH CAP STAMPED
C&W PRM LB 3591
- - DENOTES PERMANENT CONTROL POINT
- ▲ - 1/4 SECTION CORNER

CURVE #	DELTA	RADIUS	LENGTH	CHORD BEARING	CHORD DISTANCE
C1	9°10'33"	329.00'	52.69'	N64° 53' 27"E	52.63'
C2	9°10'33"	300.00'	48.04'	N64° 53' 27"E	47.99'
C3	6°56'54"	356.00'	43.17'	N63° 46' 38"E	43.15'
C4	9°07'02"	200.00'	31.83'	N75° 23' 34"E	31.79'
C5	9°07'02"	171.00'	27.21'	N75° 23' 34"E	27.18'
C6	9°07'02"	227.00'	36.12'	N75° 23' 34"E	36.08'



MATCH LINE SHEET 6

MATCH LINE A THIS SHEET